

Port Everglades – Berth 27 Expansion

Services Provided: Environmental Permitting

Client: Broward County Port Everglades
Department / Bermello Ajamil & Partners

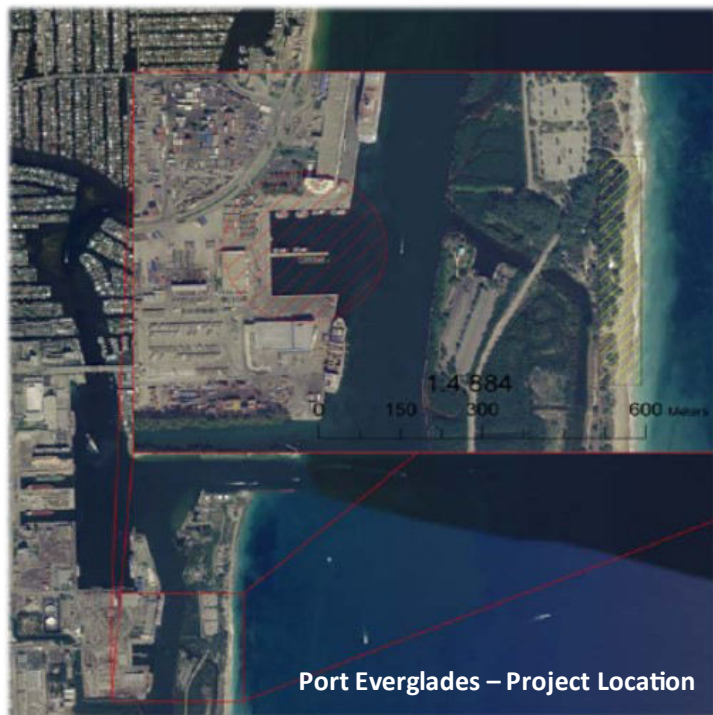
Location: Broward County, FL

DESCRIPTION OF WORK:

The project site is located within Port Everglades, adjacent to the Intracoastal Waterway (ICW) in Broward County, Florida. The project involves extending a major docking facility, Berth 27, for a length of approximately 360 feet, within an existing dredged basin. The site is surrounded by existing port facilities to the west and to the east is John U. Lloyd State Park an important sea turtle nesting area, as well as designated Outstanding Florida Waters.

CECOS was responsible for preparing and obtaining environmental permits for construction of the new berth. Permits were required from the Florida Department of Environmental Protection (FDEP), Broward County Environmental Protection Department (EPD) and US Army Corps of Engineers (USACE). Environmental issues include potential degradation to water quality, hydrodynamic circulation impacts within the basin, risks to protected species (i.e., manatee and nesting sea turtles), impacts to essential fish habitat (EFH) and marine benthic resources, addressing contaminant concerns associated with dredged material and development of appropriate construction methods to avoid/minimize turbidity and sedimentation impacts.

Extensive agency coordination was conducted with permit agency and permit review agencies including Florida Fish and Wildlife Conservation



Port Everglades – Project Location

Commission (FWC) US Fish and Wildlife Service (FWS) and National Marine Fisheries Service (NMFS). We conducted a lighting study to determine if the lights from Port Everglades were visible along the beaches of John U. Lloyd State Park and could be causing disorientation in sea turtle hatchlings. It was determined that lights from the Port and adjacent urban area could be causing disorientation. Protective lighting was recommended to be installed at the port for this project. This project was also on a time critical schedule so expediting review and responses to agency comments was required.



From the parking lot looking west toward Port Everglades